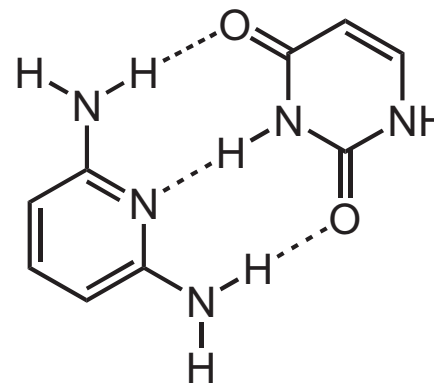
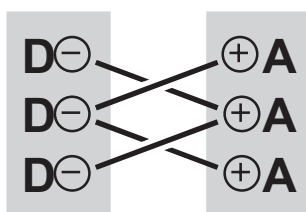


DDA•AAD
 $-\Delta G^\circ = 22.1 \text{ kJ mol}^{-1}$



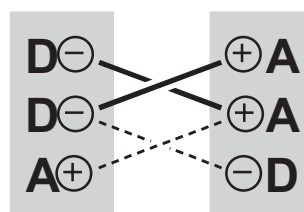
DAD•ADA
 $-\Delta G^\circ = 11.4 \text{ kJ mol}^{-1}$

"stabilizing"



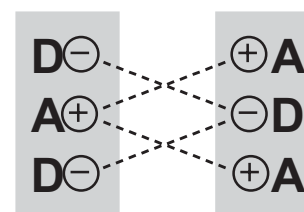
4 attractive
secondary
interactions

"neutral"



2 attractive, 2 repulsive
secondary
interactions

"destabilizing"



4 repulsive
secondary
interactions